

# Specifications

## Rating

Optical system	RGB prism method
Scanning System	Progressive Scanning 50/40/50Hz
Image Pickup Device	1/3-inch CMOS x 3
Effective Pixels	1920(H) x 1080(V)
C-Mount	
Output Signal	HDMI, BNC 2ch, 1920x1080 1/P DVI (ch. 1920x1080 1/P) Y/CSC Composite BNC 1ch
External Synchronizer	Tri-level SYNC (LV/67/750, 1ch) no color frame lock of the down-converted output.
Remote Control	4 points, 1 line D-SUB 9 (optional)
Other Input/Output	Image freeze, Still Image Save (Video recording stop) Scene File Switching, Flip Function, Fluorescent, ICG mode, Electronic Zoom (IN/OUT) and DCC are chosen optionally. USB2.0 SDHC SDHC For Still Image Video Recording, 1ch* For Still Image Video Recording, 1ch* For Scene File saving and Loading, 1ch
Camera Cable	Standard Length: 5m, 5m+10m Max. Length: 30m (with booster option)
Dimension/Weight	Camera Head: W34xH40xD20mm (excluding protrusions), 100g approx. CCU: W210xH60xD220mm (excluding protrusions), 58g or less
Power Requirement	AC100V ~ 240V, 40W, 50/60Hz
Power Consumption	approx. 30VA
Operating Environment	Temperature: 0°C to 40°C Humidity: 0% to 80%RH (non-condensing)

## Performance

Resolution	Horizontal: 1000 TV lines Vertical: 1000 TV lines (0801 5/3, 9/4, H/25/34/2)
S/N	50dB (Gamma/Detail OFF)
Sensitivity	F16 at 2000K, 12000K with Line Mix On
Registration Error	Within 0.05%, or on full screen

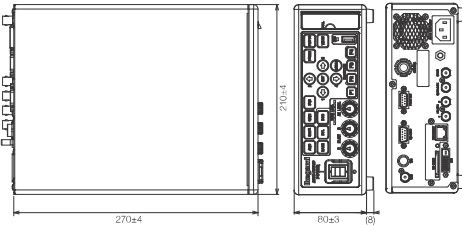
## Function

Electronic shutter (rolling shutter)	Manual: 1/800 (OFF), 1/100, 1/125, 1/250, 1/500, 1/1000, 1/2000, 5/6000, 1/8000, 1/16000, 1/32000 Automatic: 1/60 ~ 1/10000 range
Base Gain Selection Function	Slow: 1x, 1.5x, 1.75x, 2x, 4x, 8x, 16x, 32x dB: -5dB ~ +68dB (dB step)
Automatic Function	Auto White Balance (AWB) Auto Gain Control (AGC) - 18dB (max. value can be set at each 3dB) Auto Contrast (AC) Auto K1x8
Image Connection Function	Shading Correction, DTL, Blank Connection, Image Connection and Gradation Correction
Its Phenomena Area Range	Narrow Middle Field (Circle) USER
Image Flip and Turn	Horizontal, Vertical
Scene File	4 files (CCU front switch) Saving data can be stored in USB memory
Still Image File Output	1920x1080 pixel JPEG Image Quality: LOW/MIDDLE/HIGH
Video File Output	1920x1080 pixel AVI Image Quality: LOW/MIDDLE/HIGH
Recording Media	USB Memory and SDHC card (with USB2.0 interface) User's choice of 2GB ~ 32GB
AV Controlling	Image position can be adjusted in horizontal (front vertical) (V) position
Center marker Display function	Available
Digital Zoom	1.7x ~ 4x
ICG Mode	Available (ON/OFF) via function switch or foot switch
Fluorescent Mode	Available (ON/OFF) via function switch or foot switch
Color Bar	Built-in
Color Correction (paint)	Re-channel / Bi-channel Connection available via pressing the CCU front switch
Brightness Adjustment	Available via pressing the CCU front switch
Freeze Function	Control via pressing the CCU front switch or foot switch (print, still image) can be exchanged

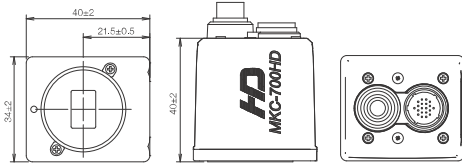
\*Media at all use formatted on this camera. The possible recording capacity is max. 127GB. And it's necessary to have more than 2GB free space when recording starts. This camera has no video playback function. We can't guarantee the operation of all function.

## Dimensions (Unit:mm)

### CCU



### Camera Head



# Ikegami



Full HDTV 3CMOS Progressive Scan Camera

# MKC-700HD

Another eye to support surgical procedures



Product names and company names mentioned in the catalogue are trademarks and/or registered trademarks of their respective companies. Design and specifications are subject to change without notice.



## US93A103-EU



**Ikegami Tsushinki Co., Ltd.**  
 ■ Head Office: 5-6-16 Ikegami, Ohta-ku, Tokyo 146-8567, Japan ■ URL: <http://www.ikegami.co.jp/en/>  
 ■ Overseas Sales Division: 5-6-16 Ikegami, Ohta-ku, Tokyo 146-8567, Japan ■ TEL: 03-5700-1111 / FAX: 03-5700-1137  
 ■ Beijing Office: Room No. 307 Tower B, Jia Tai International Mansion No. 4 East Fourth Ring Road, Chaoyang District, Beijing China ■ TEL: 03-5700-1117 / FAX: 03-5748-2200  
 ■ Ikegami Electronics (U.S.A.), INC. ■ URL: <http://www.ikegami.com>  
 ■ Headquarters: 300 Route 17 South, Mahwah, NJ 07430 U.S.A ■ TEL: 01-966-9171 / FAX: 01-966-1626

**Ikegami Electronics (Europe) GmbH**  
 ■ Headquarters: Ikegamistraße 1, D-71460 Neuss, Germany ■ URL: <http://www.ikegami.de>  
 ■ TEL: 02131-1230 / FAX: 02131-102820

**Ikegami Electronics Asia Pacific Pte. Ltd.**  
 ■ URL: <http://sg.ikegami.co.jp>  
 ■ Headquarters: 1 Tampines Central 5, #06-04 CPF Tampines Building, Singapore 529508 ■ TEL: 6260-8820 / FAX: 6260-8898

The best quality image and high sensitivity provide a new age of Ikegami medical imagery.



### Full HD High Quality Picture Output

Employs 2.2 million pixel 1/3-inch CMOS sensors achieving a high horizontal resolution (1000TVL) and 56dB SNR.

### High sensitivity

Provides a high sensitivity of F16 at 2000 lx (Line Mix On), two times better than conventional cameras\*. The high-sensitivity mode (2x higher) can be set for use in low light environments.

\*compared with prior model Ikegami 3CMOS Camera

### New Digital Processor

Progressive processing with a newly developed digital processor delivers improved detail and dynamic resolution.

### Dynamic Contrast Correction (DCC)

A newly developed gradation corrector achieves a higher contrast image without halo or black defects. Also improves the contrast level in the fine details of the picture.

### Image-Corrector

The quality of visual resolution and depth of field are significantly improved by the special image-corrector.

## FUNCTIONS

### Automatic Iris Function

A deep depth of field is possible with use of an auto-iris camera adaptor or auto-iris lenses.

### Automatic Electronic Shutter System (AES)

An electronic shutter (AES) function maintains optimized performance in a variety of lighting situations.

### Automatic Gain Control

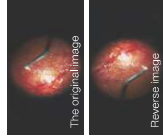
The gain can be adjusted automatically to provide the proper brightness.

### Digital Zoom

A maximum 4x digital zoom is available.

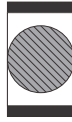
### Mirror, Flip and Rotate Function

Digital capture allows a captured image to be flipped horizontally and vertically. It is remote controllable via an external optional unit such as a foot switch.



### Various Video Outputs

Digital HDTV signal (HD-SDI), DVI (1920x1080), and SDTV signal (NTSC composite, Y/C) can be output. The SDTV signal output can be set for side cut or letter box.



Side cut



Letter box

### Fluorescent Video Shooting

ICG\*, Fluorescent and 5-ALA HDTV shooting modes are available when using a CVA-300RIR optional surgical microscope adaptor. It is possible to switch automatically between the ICG shooting mode and the normal shooting mode.

\*Optional ICG camera adaptor is necessary.

### Level Indicator

The video level can be checked and adjusted using a level indicator.



### H/V Centering Function

Optical centering position can be adjusted horizontally and vertically via this function.

### Scene File

Each correction/function setting can be saved and loaded easily using the 4 available Scene files. Scene files can also be saved and loaded to USB memory.

### Function Switch

Various functions can be assigned to Function Switches (F1-F4), giving the user quick access to the necessary functions for the application.



### Remote Control Function

Connecting the optional foot switch to the remote control terminal gives control of Image Flip, Still Image Capture, or Scene File Select.

### Still Image and Video Recording

By selecting the USB port on the front panel or the SD card slot on the rear panel, still image and video recording can be started. Max. 12Mbps Video file (AVI format with H.264) and still image (JPEG format) can be stored.

\*Media should be formatted on this camera. The maximum possible recording capacity is 127GB (it is necessary to have more than 2GB free space when recording starts). This camera has no video playback function. Ikegami does not guarantee the operation of all Media.

### 3D Master-Slave Control (3D requires two cameras)

By setting up two cameras as master camera and slave camera, the slave camera will automatically follow the control of master camera.

### Camera Cable Max.30m

The cable between camera head and CCU can be extended to a maximum distance of 30m.

\*It is necessary to use an optional booster and dedicated cable for 30m operation.

## ACCESSORIES

### Surgery Microscope Adaptor



CVA-300RN  
Variable focal length type



CVA-300RIR  
Variable focal length type  
■ ICG shooting available



CVA-300RS  
Variable focal length type



CFA-200  
Fixed focal length type

### Anti-biotic Coating (Antibacterial Coating Material)

The camera head and CCU (camera control unit) use an antibiotic to help to improve infection control.

### Ultra Compact Camera head

The optical block style camera head is lightweight and ultra-compact.



### Other Accessories



Camera Cable  
MCCG-HP-050(5m)  
MCCGC-P-100  
(For extension 10m)



Dual Foot Switch  
OFLTV-SP